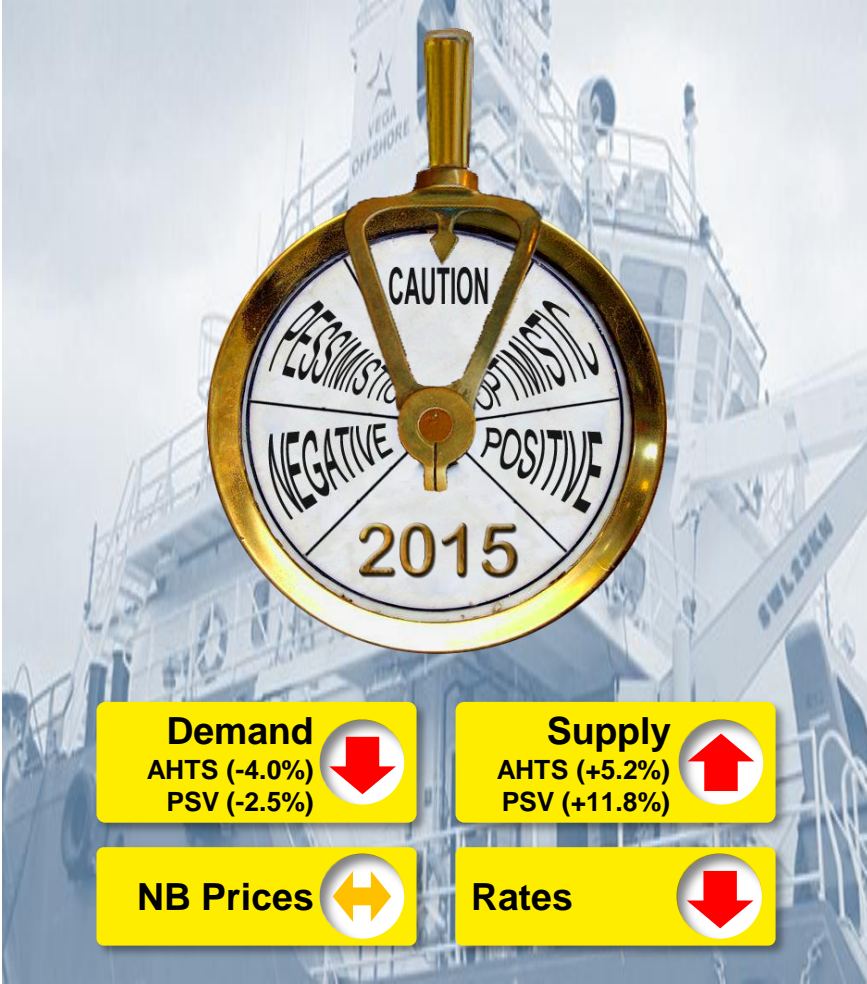
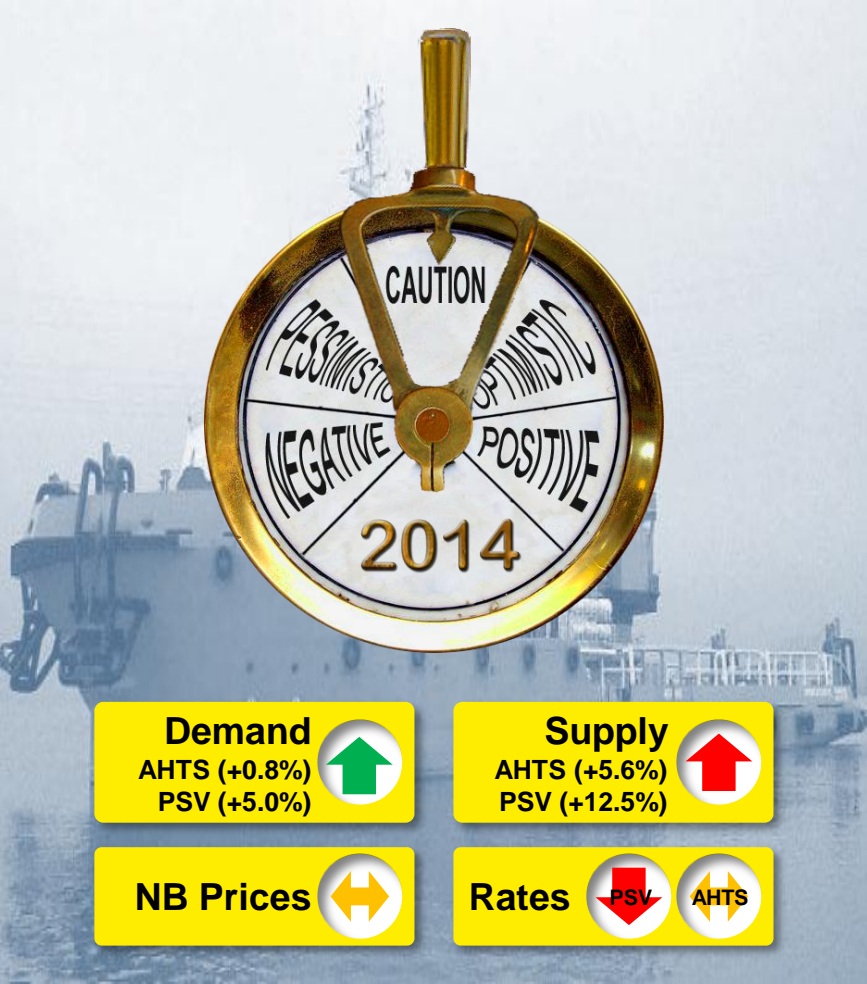


DVB research video – November 2014

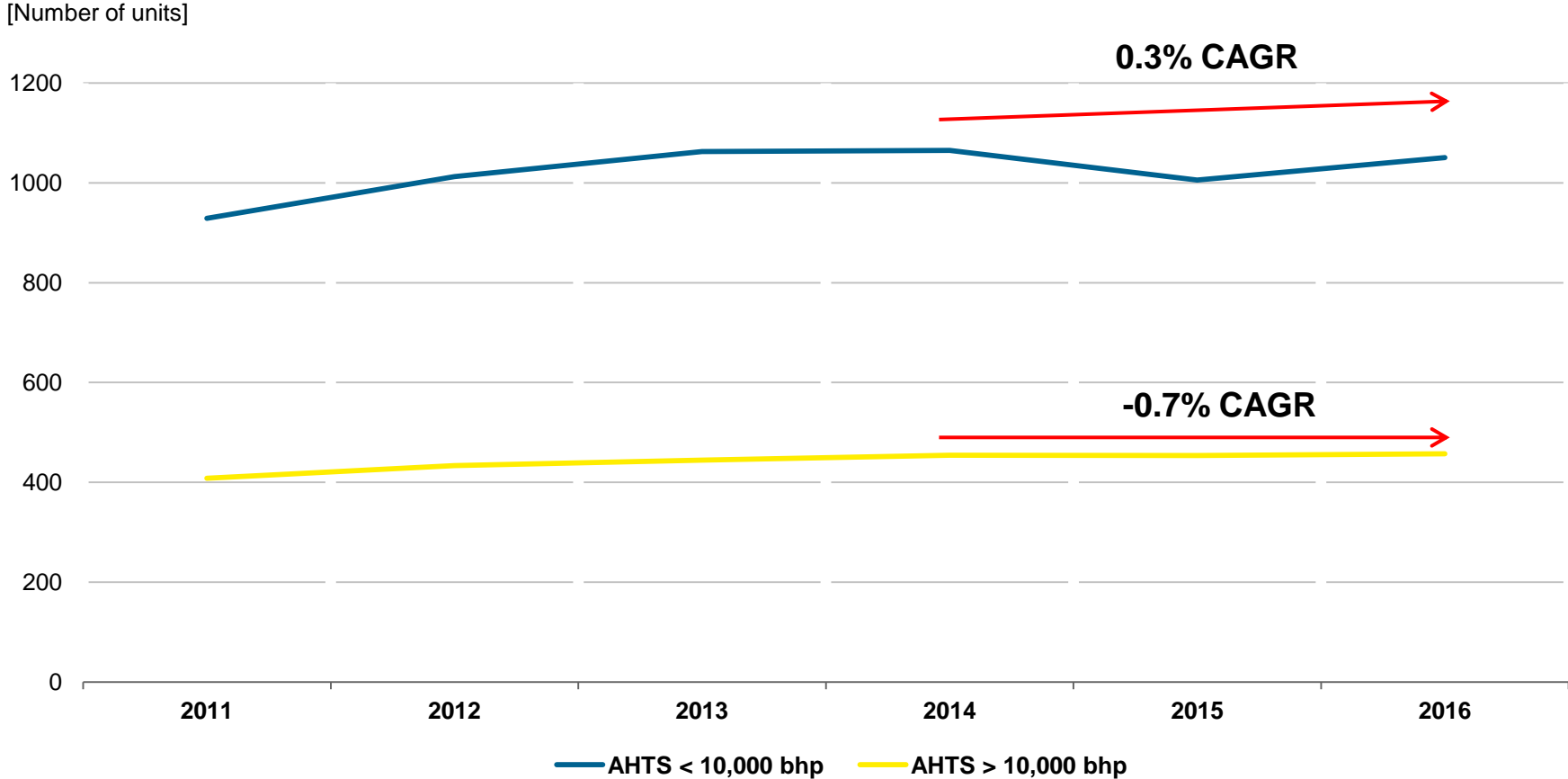
Henriette Brent-Petersen
on Offshore support vessels



Offshore support vessels – Market review



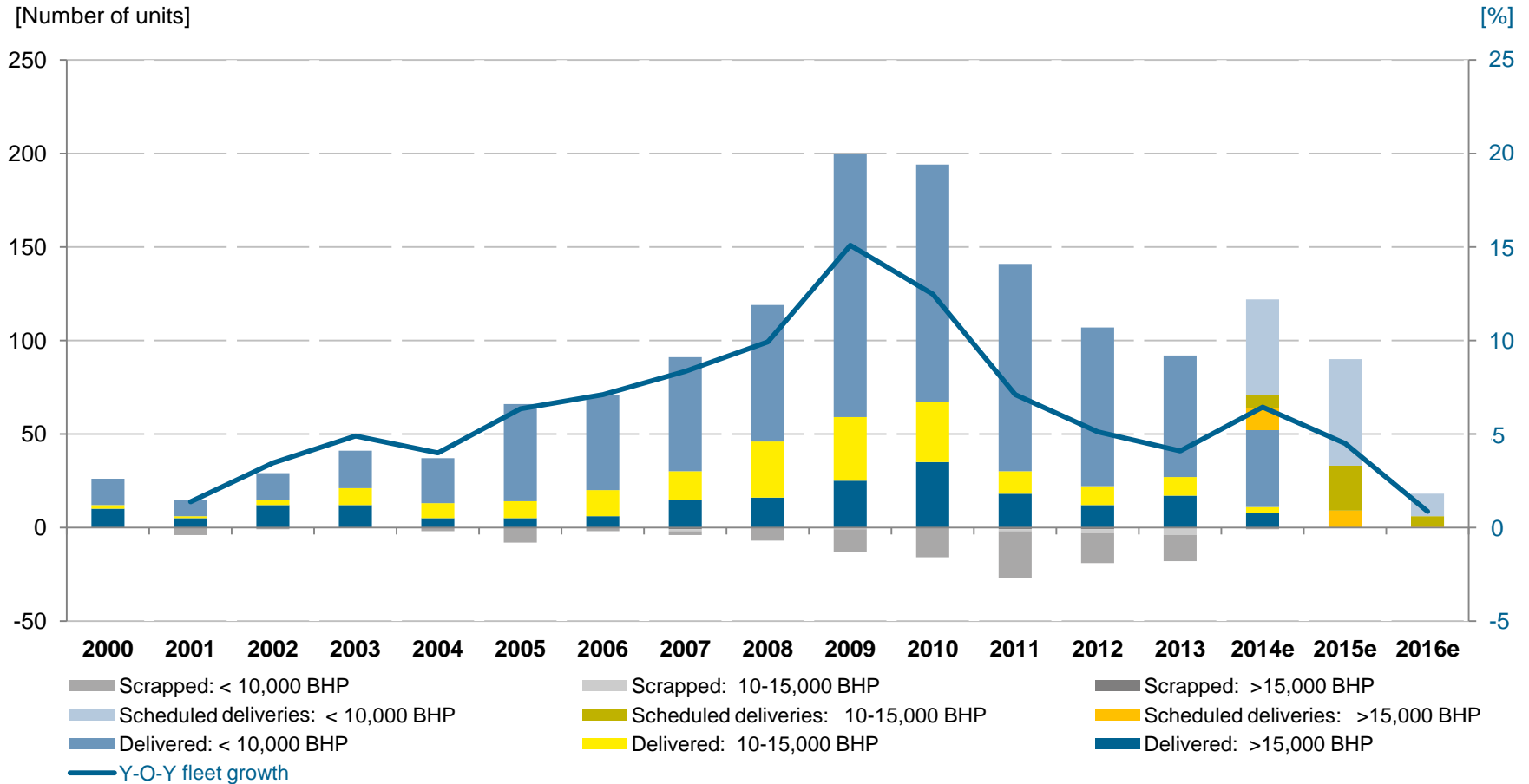
Anchor handling tug supply vessels (AHTS) – Demand dynamics



Source: Rystad Energy, Riglogix, IHS Marinebase / DVB Shipping & Offshore Research



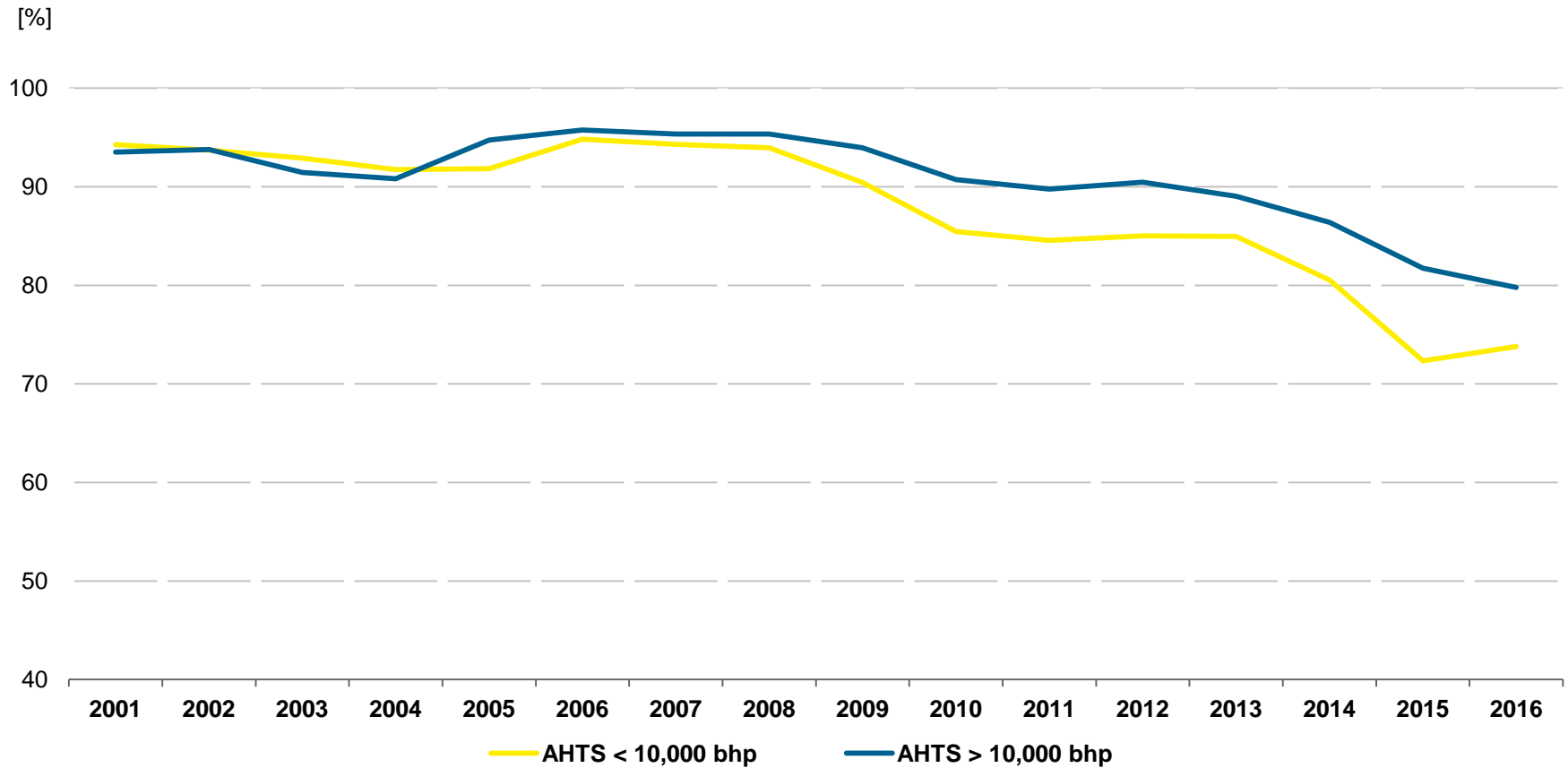
AHTS fleet development



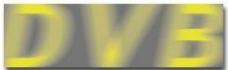
Source: IHS Marinebase / DVB Shipping & Offshore Research



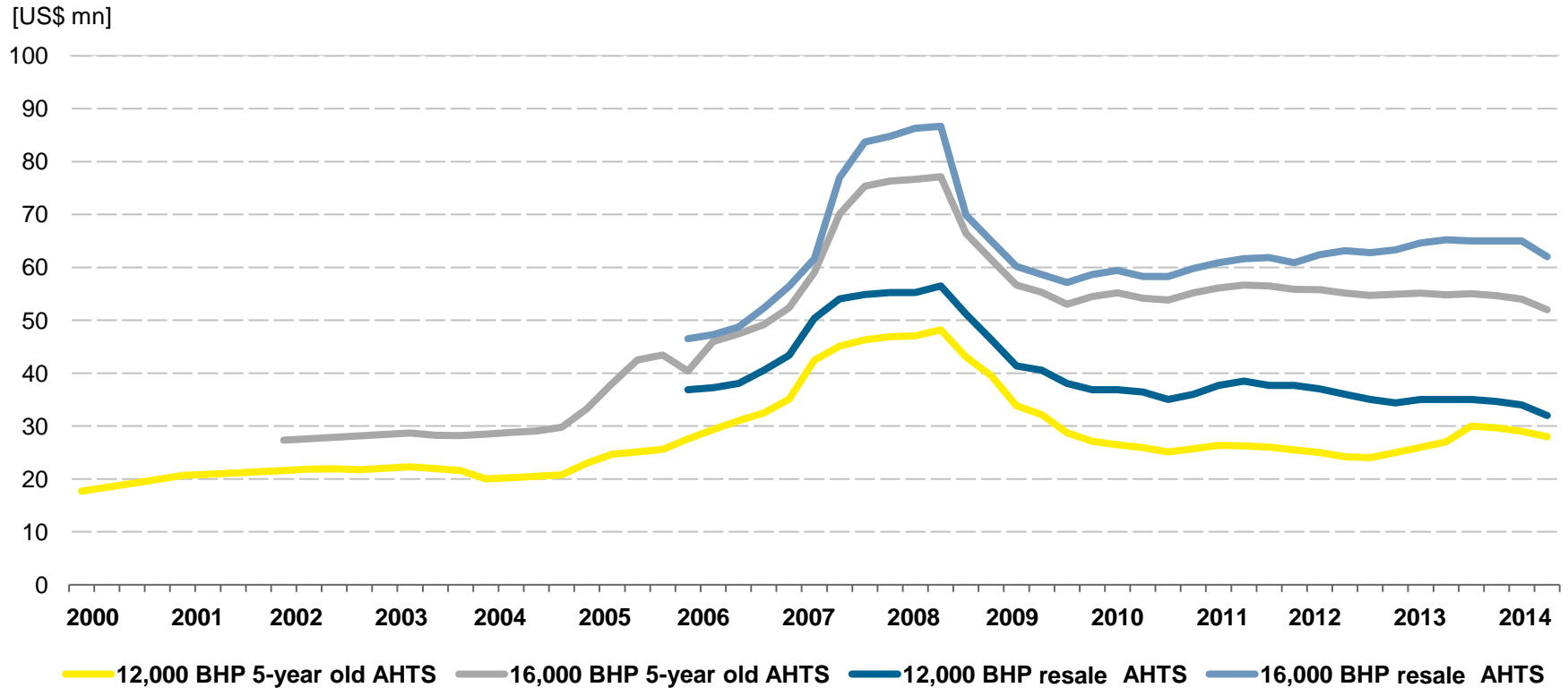
AHTS – Forecast utilisation



Source: Rystad Energy, Riglogix, IHS Marinebase / DVB Shipping & Offshore Research



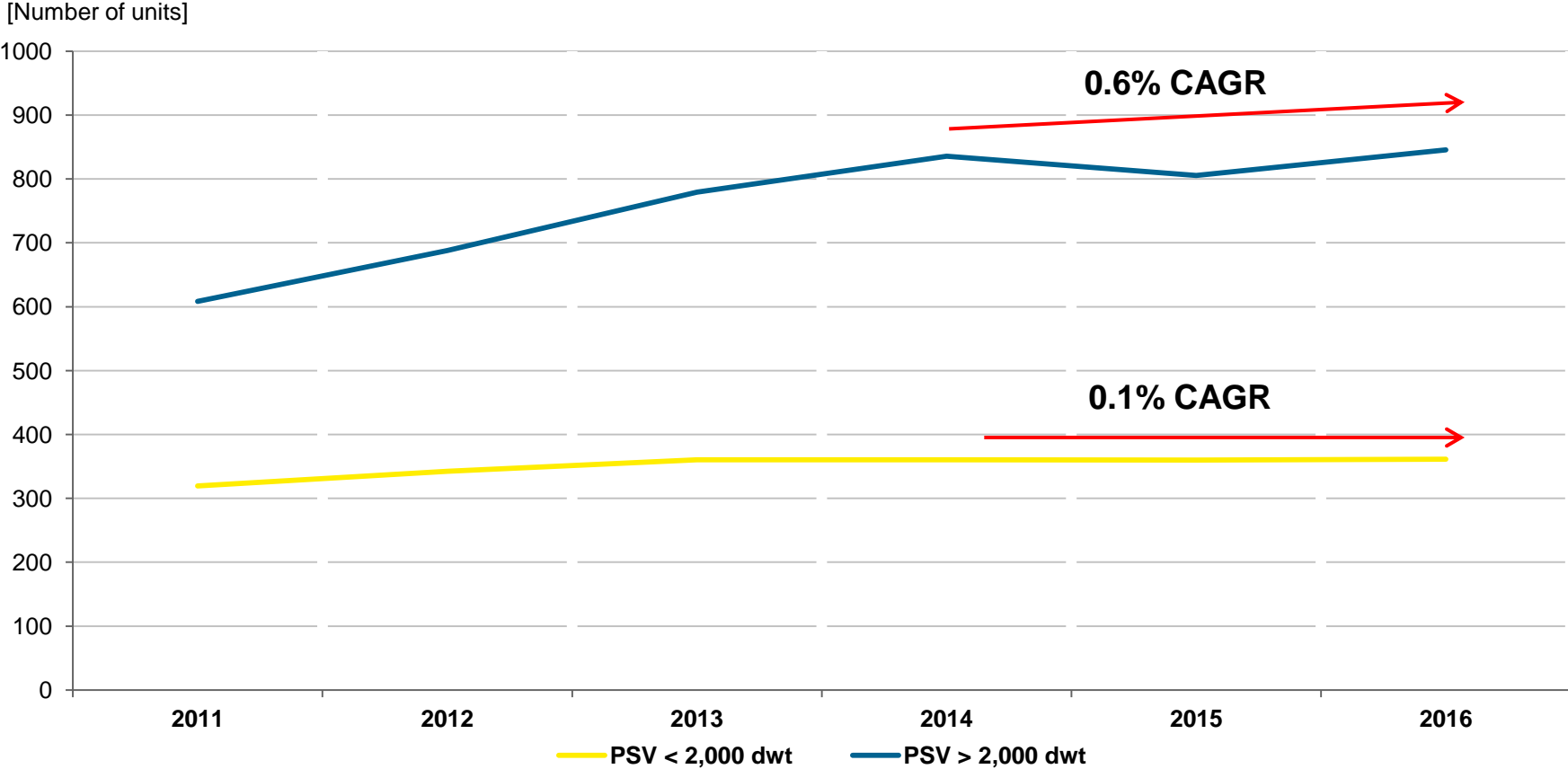
AHTS – Secondhand values



- We do not expect any strong decrease in rates and values for these units.

Source: RS Platou / DVB Shipping & Offshore Research

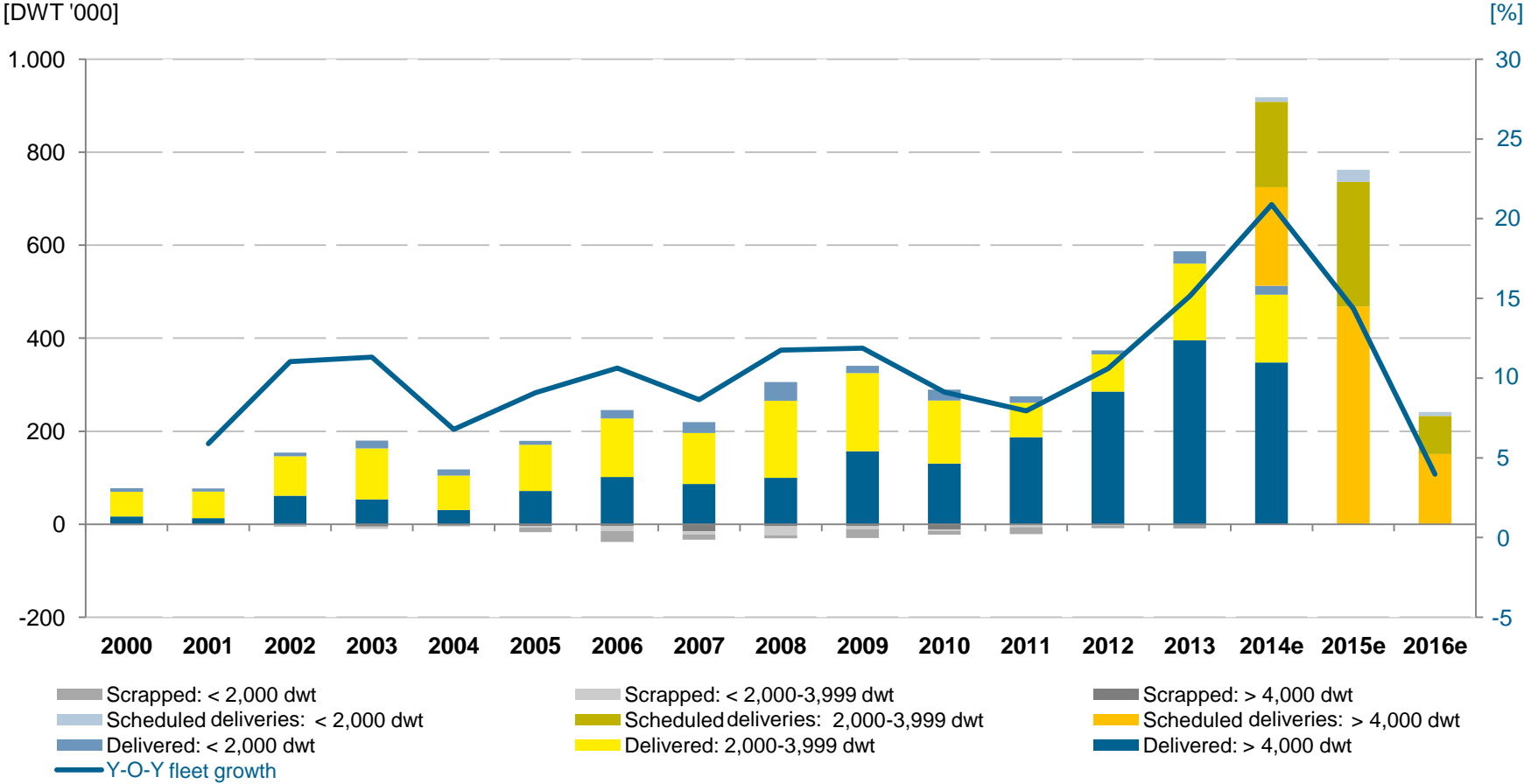
Platform support vessels (PSV) – Demand dynamics



Source: Rystad Energy, Riglogix, IHS Marinebase / DVB Shipping & Offshore Research



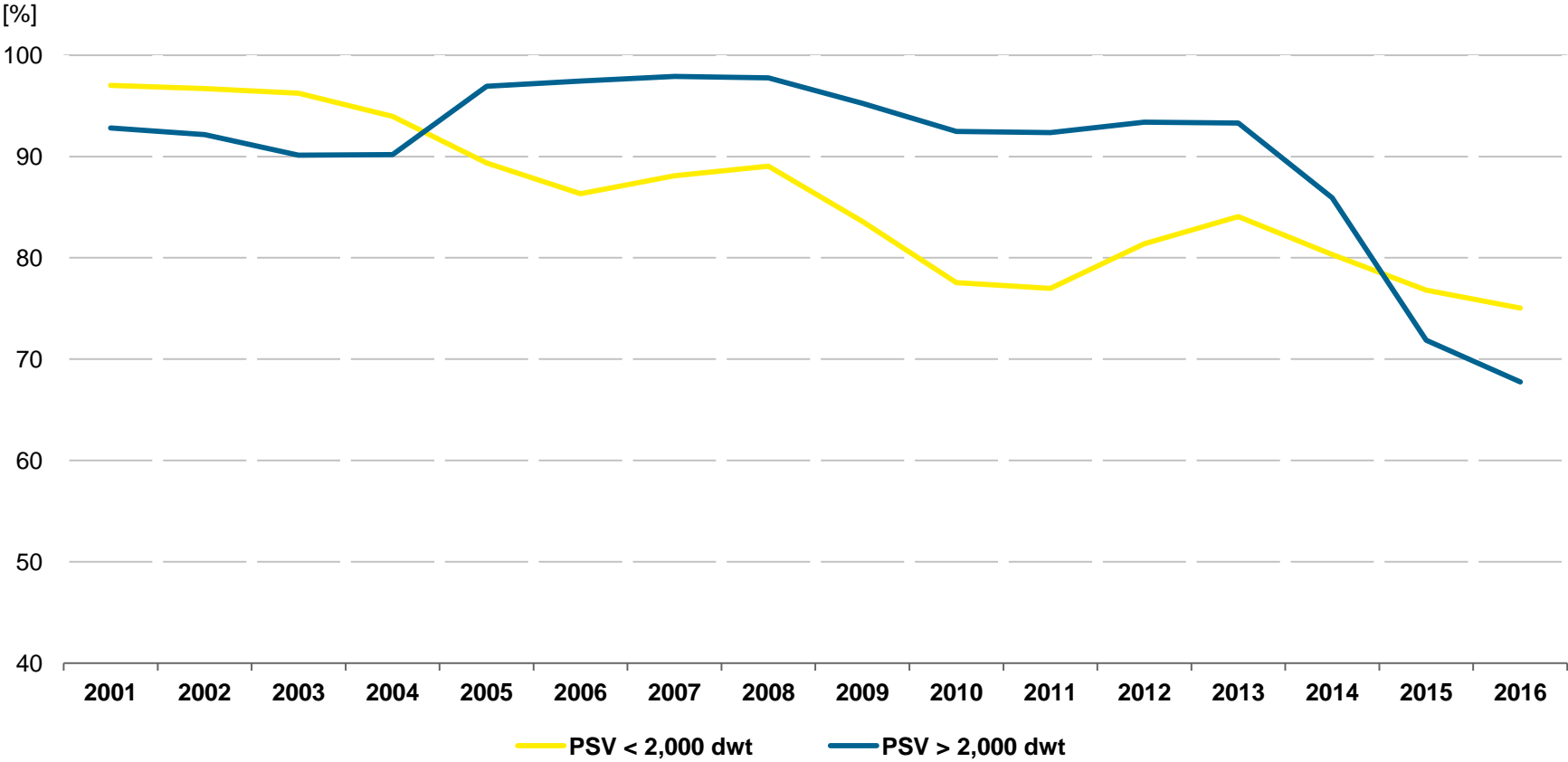
PSV fleet development



Source: IHS Marinebase / DVB Shipping & Offshore Research



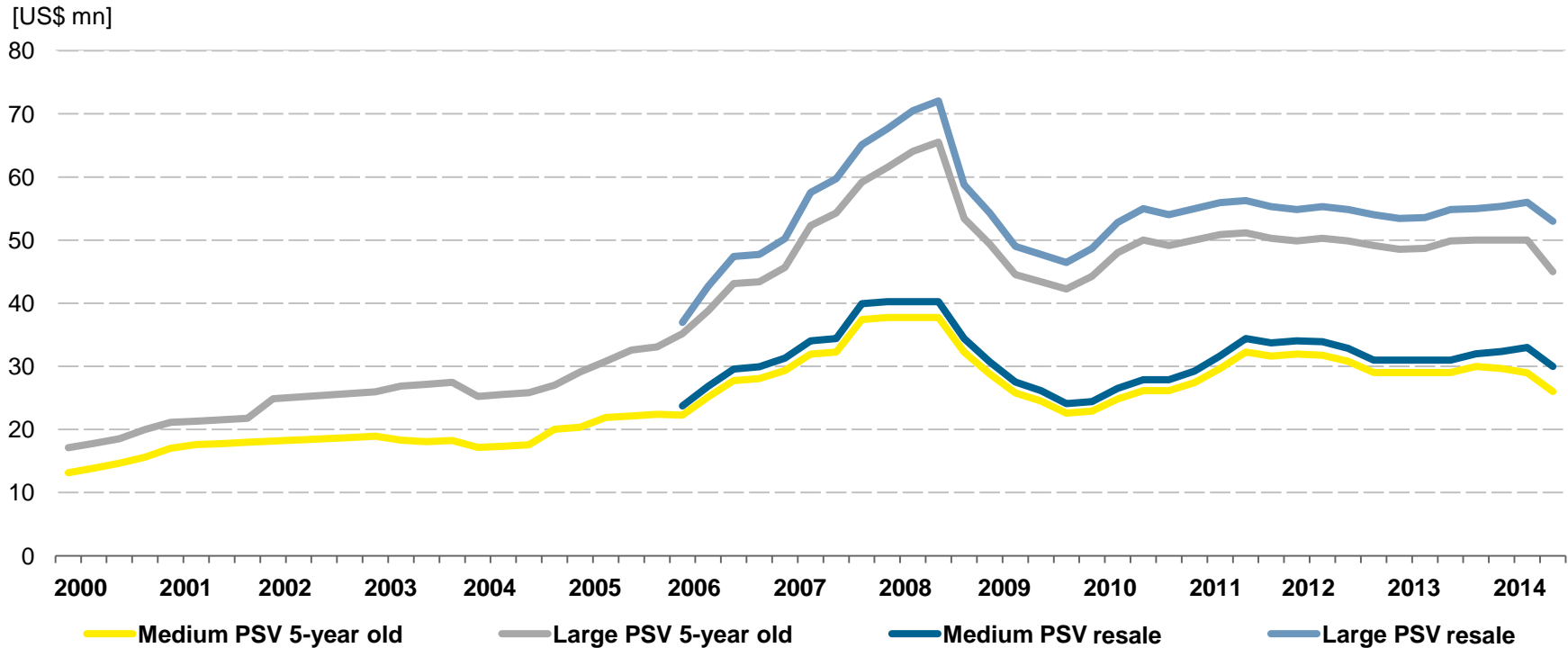
PSV - Forecast utilisation



Source: Rystad Energy, Riglogix, IHS Marinebase / DVB Shipping & Offshore Research



PSV – Secondhand values



- Secondhand prices have started to decrease and are expected to continue to follow a downward trend due to oversupply concerns. Less sophisticated units are and will continue to be more affected.

Source: RS Platou / DVB Shipping & Offshore Research

